

Bizzi & Partners Development



Design-Driven Development



INTRODUCING
BIZZI & PARTNERS DEVELOPMENT

Founded in 2000 by Davide Bizzi, Bizzi & Partners Development is a global real estate firm focused on the development of premiere commercial and residential properties in Europe and The Americas. The firm is led by an executive team with decades of experience in real estate development, including the acquisition, financing, construction, and renovation of a wide array of property types.



MISSION

Bizzi & Partners Development collaborates with world-leading architects, engineering firms and other specialists in the design of every property it develops. These collaborations, which are established on a project-by-project basis, ensure that every development is aesthetically in harmony with its location and constructed to the highest standards.

FEATURED PROJECTS

Bizzi & Partners develops properties
in established and emerging markets
across Europe and The Americas.



NEW YORK CITY, USA

400 Fifth Avenue

TYPE: COMMERCIAL & RESIDENTIAL TOWER

SIZE: 53,000 SQUARE METERS (570,000 SQUARE FEET)

ARCHITECT: GWATHMEY SIEGEL & ASSOCIATES ARCHITECTS

MILAN, ITALY

Milanosesto

TYPE: MIXED-USE

SIZE: 1 MILLION SQUARE METERS (10 MILLION SQUARE FEET)

ARCHITECT: RENZO PIANO

BORDIGHERA, ITALY

Hotel Angst

TYPE: MIXED-USE RESIDENTIAL AND HOSPITALITY

SIZE: 12,000 SQUARE METERS (130,000 SQUARE FEET)

NATAL, BRAZIL

Estrela do Atlântico

TYPE: RESIDENTIAL

SIZE: 468 UNITS

ARCHITECT: ABREU / BARROS

NEW YORK CITY, USA

The Leonard

TYPE: MIXED-USE RESIDENTIAL AND RETAIL

SIZE: 13,000 SQUARE METERS (140,000 SQUARE FEET)

NEW YORK CITY, UNITED STATES

400 Fifth Avenue

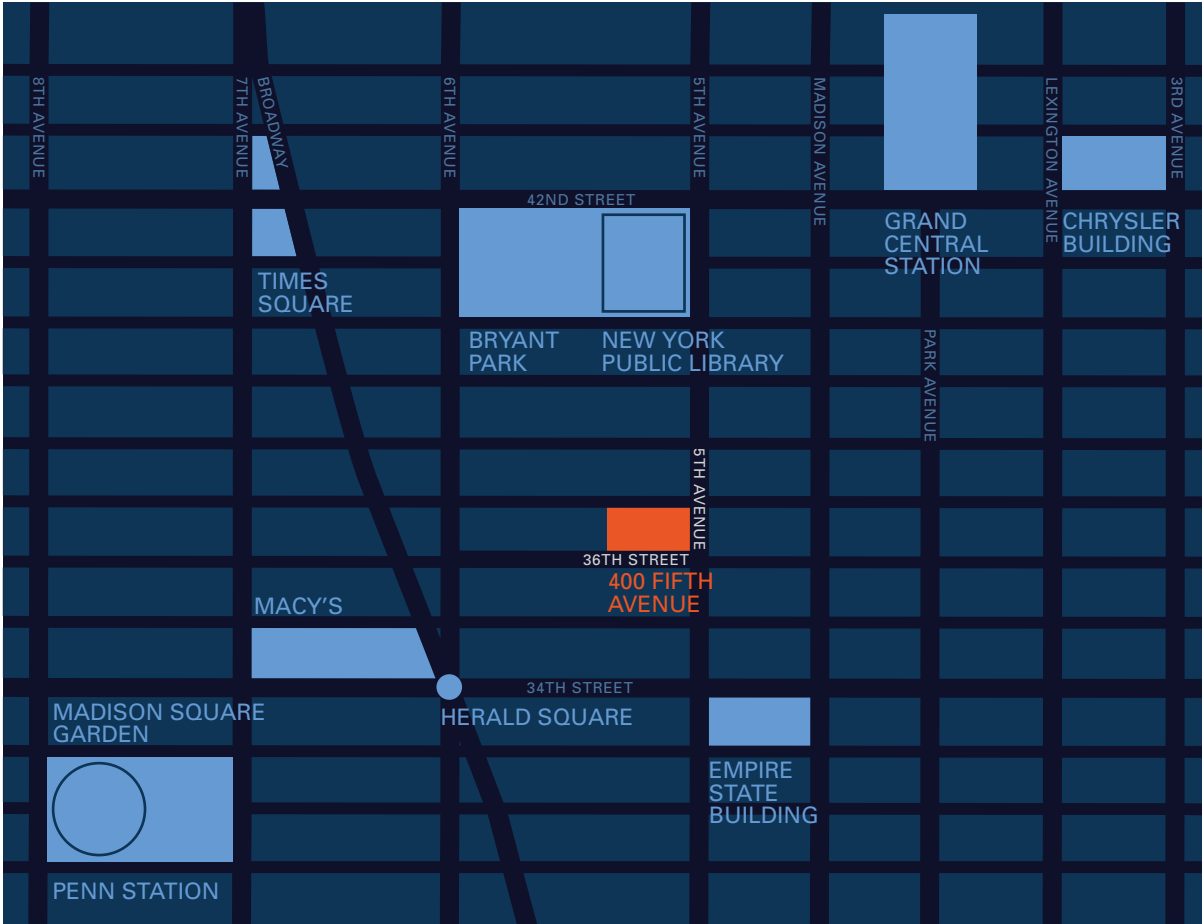
400 Fifth Avenue, Bizzi & Partners Development's first project in the United States, is a \$700 million new construction luxury high-rise hotel and residential tower located in the heart of Midtown Manhattan in New York City. The firm purchased the land in 2006 and completed construction in 2010. Designed by the internationally renowned firm Gwathmey Siegel & Associates Architects (now Gwathmey Siegel Kaufman & Associates Architects), its 60-story contemporary glass and limestone façade is topped by a distinctive illuminated crown fabricated from textured stainless steel. Interiors were done by DAS Concepts, Inc.





400 Fifth Avenue is a 60-story building with a luxury hotel, residential condominiums, and amenities including a restaurant, a bar and lounge, and a state-of-the-art spa and fitness center. The property’s prime location is within easy walking distance of globally recognized landmarks, including the Empire State Building.

400 FIFTH AVENUE OFFERS A PREMIERE
MIDTOWN MANHATTAN LOCATION



INTERIOR DESIGN BY
DAS CONCEPTS, INC.



RESIDENTS'
OUTDOOR TERRACE
AND LOUNGE



PENTHOUSE
SUITE WITH
PANORAMIC
VIEWS



FAÇADE DETAIL
WITH FACETED
WINDOWS



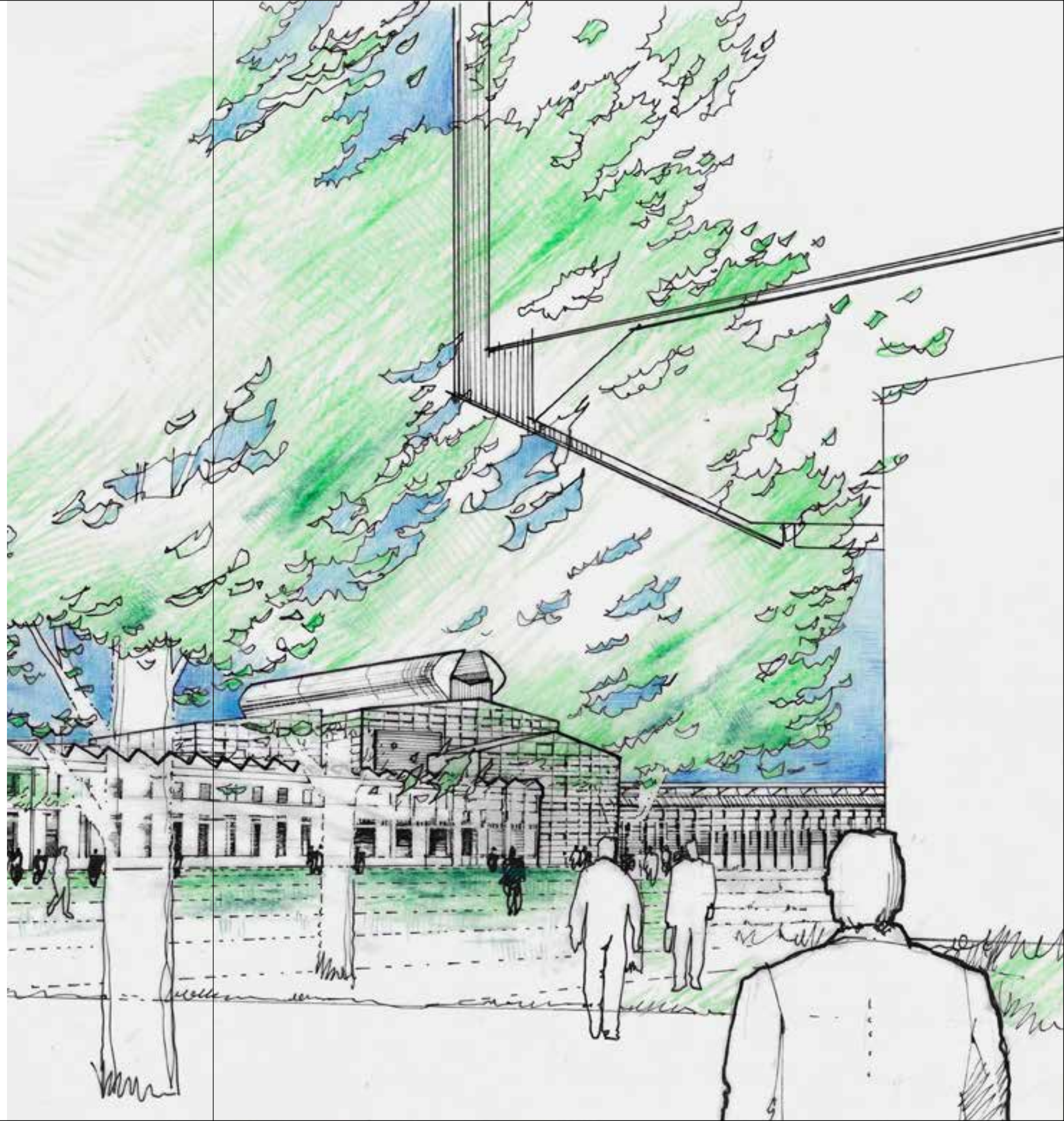
ARCHITECTURE BY
GWATHMEY SIEGEL
& ASSOCIATES

MILAN, ITALY

Milanosesto

Milanosesto is a €4 billion mixed-use project located in Sesto San Giovanni, just 6 kilometers (3.7 miles) from the central business district of Milan in northern Italy. It is the single largest commercial project in Italy and one of the largest in Europe.

Pritzker Prize-winning Italian architect Renzo Piano has designed the project's master plan, which calls for approximately 70 hectares (173 acres) of green space and over 1 million square meters (10 million square feet) of newly constructed and renovated commercial and residential buildings.





Renzo Piano’s master plan envisions Milanosesto as a dynamic urban environment softened by abundant and engaging open spaces. The plan is sensitive to the themes of energy conservation and sustainability as well as the historic nature of the site, which includes a number of architecturally distinctive industrial buildings.

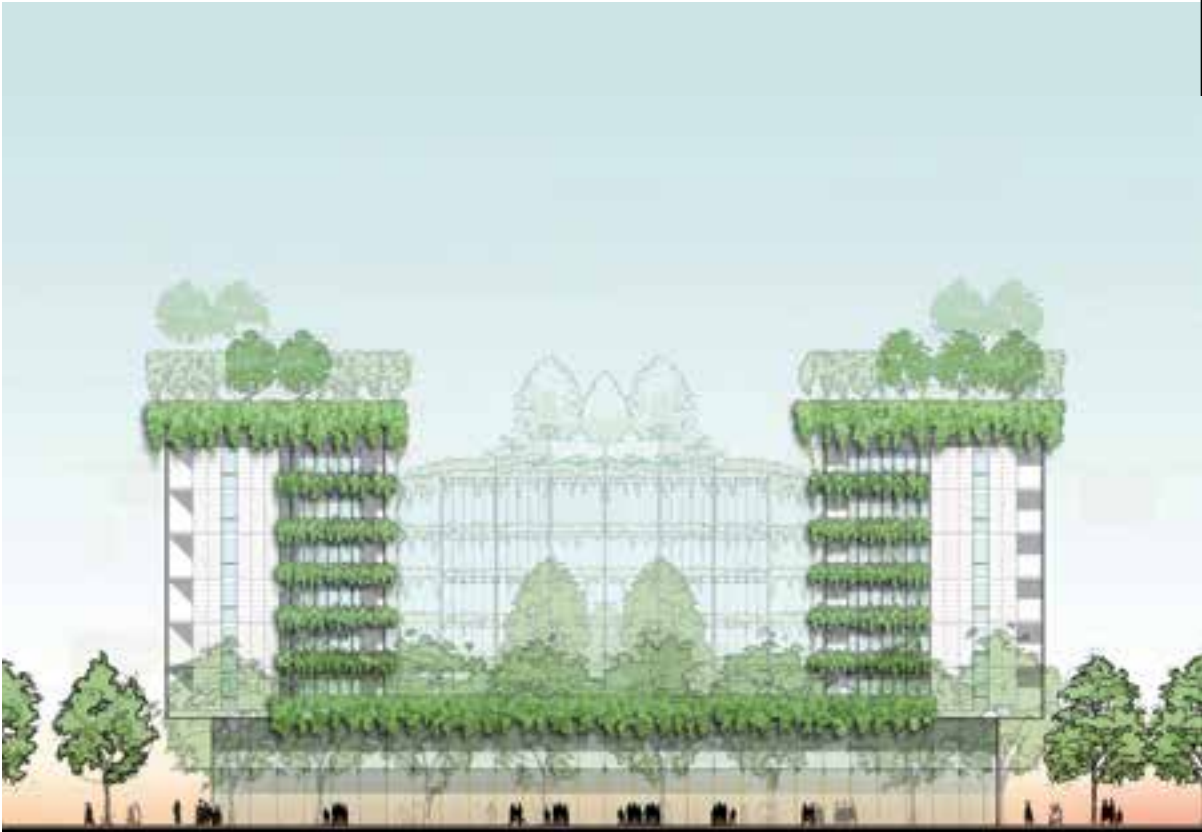
MILANOSESTO IS LOCATED
IN SESTO SAN GIOVANNI NEAR
MILAN, ITALY



THE HISTORIC T3
PAGODA WILL BE
CONVERTED TO A
PUBLIC SPACE

A CANDIDATE FOR
UNESCO WORLD
HERITAGE STATUS

*PHOTOGRAPH BY
GIANNI BERENGO
GARDIN*



THE DESIGN OF
'CASE BASSE'
WAS DONE BY
ITALIAN ARCHITECT
RENZO PIANO

BORDIGHERA, ITALY

Hotel Angst

Located in Bordighera, Italy on the Italian Riviera, Hotel Angst is a 19th-century hotel set on 24,000 square meters (6 acres) of botanical gardens. It was known as one of the continent's most prestigious and opulent hotels before it fell into disrepair between the two World Wars. Bizzi & Partners Development has acquired the abandoned property, which includes two historic structures, and is in the process of renovating it into a mixed-use luxury hotel and residential property that will once again appeal to an international crowd of sophisticated and affluent clientele.





Upon completion, Hotel Angst will offer approximately 70 hotel rooms and 55 residences as well as comprehensive personal services and exceptional amenities, including fine dining, a spa and an outdoor pool. The restoration will preserve important historic aspects of the original buildings while introducing elements that speak to modern sensibilities.

HOTEL ANGST IS LOCATED
ON THE ITALIAN RIVIERA IN
BORDIGHERA, ITALY



EXTENSIVE
BOTANICAL
GARDENS WILL
BE RESTORED



IMPORTANT
HISTORIC
FEATURES WILL
BE PRESERVED

NATAL, BRAZIL

Estrela do Atlântico

Estrela do Atlântico is a high-rise residential property located near Ponta Negra Beach in Natal, the capital city of Rio Grande do Norte, a northeastern state in Brazil. Bizzi & Partners Development acquired the property in 2006 and completed construction in 2012. The project's two 39-story towers were designed by Brazilian architecture firm Abreu / Barros. Natal, the closest city in South America to Europe, offers an international airport and is in the process of building a new airport, which will be one of the largest in the Latin-South American region.



Estrela do Atlântico offers 456 one-bedroom apartments and 12 duplex two-bedroom apartments. All feature modern interiors and private balconies that capture the area’s tropical style. The property, which has been designed with lush exterior grounds and extensive recreational and leisure amenities, is the first full-service community in the local area.

NATAL, BRAZIL IS THE CLOSEST CITY
IN SOUTH AMERICA TO EUROPE



THE PROPERTY
FEATURES
LUSH EXTERIOR
GROUNDS WITH
EXTENSIVE LEISURE
AMENITIES



ESTRELA DO
ATLÂNTICO IS
LOCATED NEAR
PONTA NEGRA
BEACH IN
NORTHEASTERN
BRAZIL

NEW YORK CITY, UNITED STATES

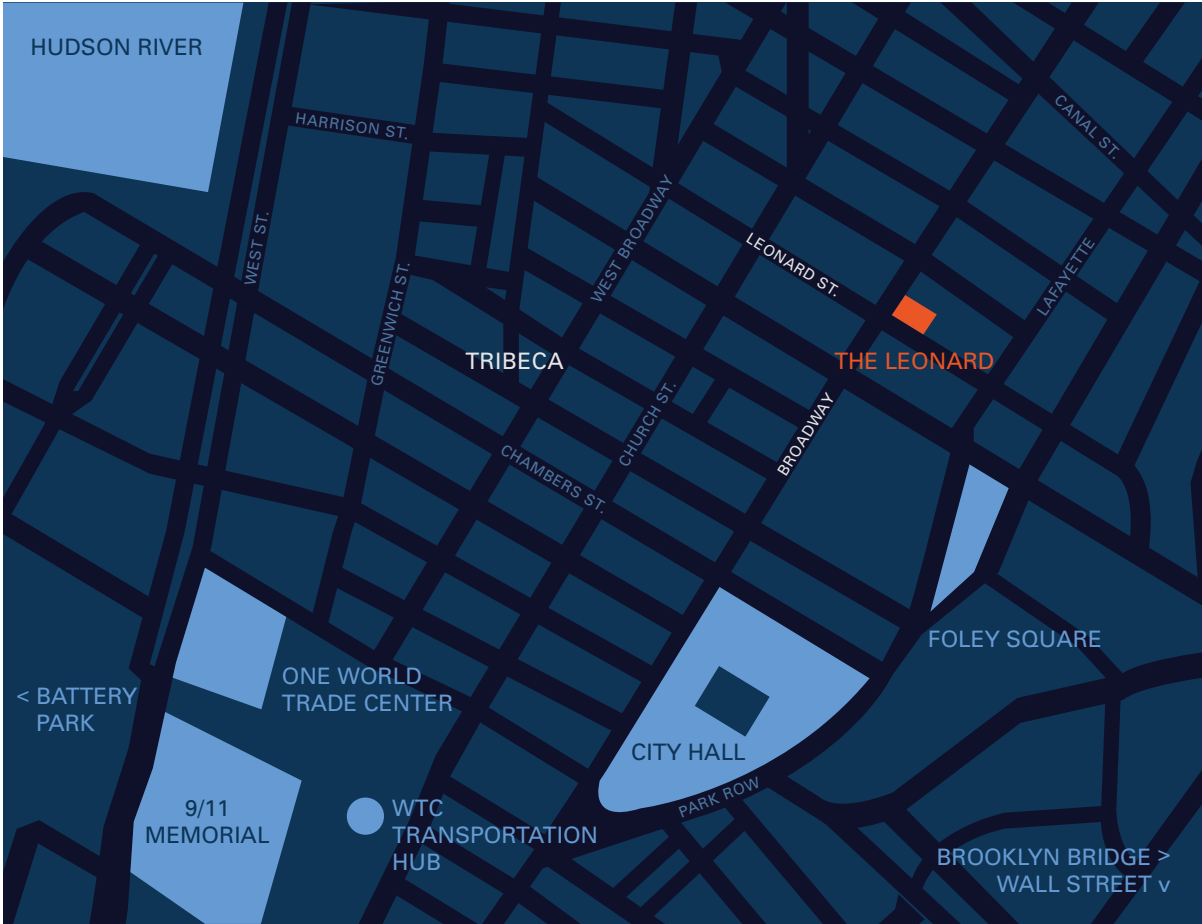
The Leonard

The Leonard is a magnificent 12-story, 140,000 square foot (13,000 square meters) residential and commercial building located at 101 Leonard Street. Bizzi & Partners Development plans to redevelop the property into 66 luxury residences with state-of-the-art design and construction, as well as lifestyle amenities that will resonate with the style of this trendy neighborhood while maintaining its historic heritage. Upon completion, the property will also offer retail space at the ground level.



The Leonard is located at the corner of Leonard Street & Broadway in Tribeca, one of Manhattan’s most vibrant and sought-after neighborhoods. Moments from SoHo, the Village, and One World Trade Center, The Leonard offers an authentic New York experience with convenient transportation to Midtown just steps away.

LOCATED BLOCKS FROM NEW YORK’S
CIVIC AND ECONOMIC CENTERS



ORIGINALLY
BUILT IN 1904,
THE BUILDING
WILL BE UPDATED
WITH MODERN
INTERIORS AND
AMENITIES
BY MITCHELL
FREEDLAND
DESIGN



A ROOFTOP
TERRACE OFFERS
SWEEPING VIEWS
OF MANHATTAN’S
STYLISH
DOWNTOWN

AMERICAS & EASTERN EUROPE

Additional Properties



PLAYA DELFINES
CANCUN, MEXICO



TOWN CENTER
CANCUN, MEXICO



TORRE ATLANTIC
HAVANA, CUBA



ELISABETES 3
RIGA, LATVIA



2 KOHTU STREET
TALLINN, ESTONIA



MARINA WORLD
TOWER
SOCHI, RUSSIA
*PRE-DEVELOPMENT
PHASE*



VISION

Bizzi & Partners Development's deep familiarity with established and emerging markets across Europe and The Americas informs the firm's broad strategic direction as well as its specific investment targets. Bringing great attention to the value of aesthetic integrity, the firm continues to develop projects that optimize the economic opportunities of their locations.

LOCATIONS

Contact Bizzi & Partners Development
at one of our global offices.



HEADQUARTERS

Milan, Italy

BIZZI & PARTNERS DEVELOPMENT S.P.A.
VIALE ITALIA, 572
20099 SESTO SAN GIOVANNI (MI) ITALY
PHONE: +39.02.4547.2900
FAX: +39.02.4547.2930

NORTH AMERICA

New York City, USA

BIZZI AND PARTNERS DEVELOPMENT LLC
55 EAST 59TH STREET, 24TH FLOOR
NEW YORK, NY 10022 (USA)
PHONE: +1.212.616.0400
FAX: +1.212.616.0401

EASTERN EUROPE

Tallinn, Estonia

KOHTU 2-28
TALLINN, EE10130 (ESTONIA)
PHONE: +372.646.1190
FAX: +372.646.1192

SOUTH AMERICA

Sao Paulo, Brazil

AVENIDA PAULISTA, 925
14 ANDAR CONJUNTO 142
01311-100 SAO PAULO (BRAZIL)
PHONE & FAX: +55.11.3263.0989

BIZZIPARTNERS.COM INFO@BIZZIPARTNERS.COM

